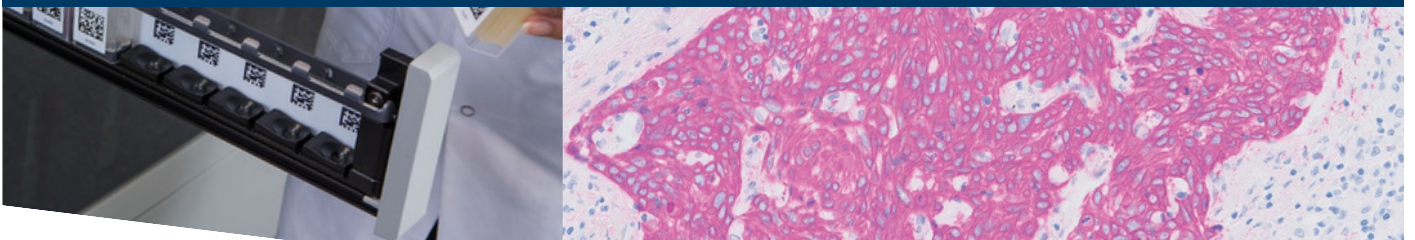


# Agilent Dako Staining Solutions for H&E, Special Stains, IHC and ISH

For Accelerated Answers You Can Rely On



# Integrated, Innovative, and Automated Solutions for Pathology Labs

## Fighting cancer together

Agilent is deeply committed to fighting cancer by bringing innovative pathology solutions and the power of precision medicine to labs, partners and patients all over the world.

We understand the many challenges faced by the modern pathology lab, from processing more slides with fewer resources, to managing growing complexity, and meeting ever-increasing quality and regulatory requirements.

To meet the individual needs of pathology labs, we develop flexible and complementary pathology solutions that are designed to deliver consistent quality results and help process more patient cases in a lean and efficient workflow. We work with pharmaceutical partners to co-develop innovative companion diagnostics to increase effectiveness of precision medicine and enable the best treatment option for patients.

As your dedicated partner we offer a broad portfolio of products and the promise of exciting new technologies, to help you provide accelerated answers you can rely on. We are committed to meeting your lab's needs, both today and tomorrow.



DakoLink software connects all Dako staining instruments providing access to slide and reagent information and enabling staining management, report generation, and real-time monitoring of DakoLink units from anywhere in the lab or across multiple sites.

Bi-directional integration with LIS allows data sharing, saves time, and reduces the risk of transcription errors and mislabeling. All Dako solutions can read the unique identifiers created in the LIS, so you can use the same label throughout the whole workflow and benefit from the flexibility of printing labels from anywhere in your lab as needed.

# Ready-to-Use Reagents for Each Agilent Dako Staining Solution

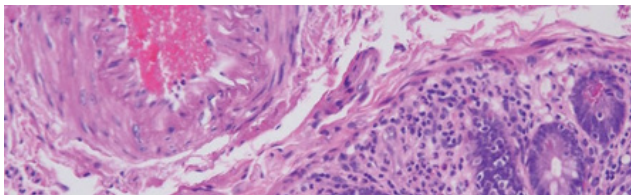
High quality, plug-and-play, and easily integrated into your workflow

Accurate and reliable staining results made easy, slide after slide

At Agilent we know that our customers depend not only on our cutting-edge technologies, but also on the quality that underlies all of our products.

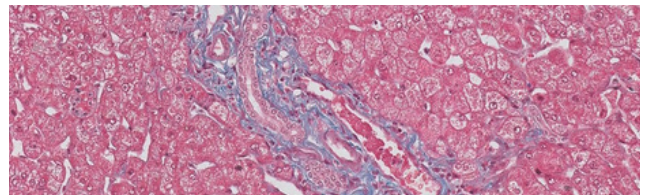
For more than half a century, Dako reagents have been known for their high quality and for ensuring accurate staining results for labs. Each one is designed and manufactured to stringent quality standards and pre-optimized for standardized, consistent staining that is both repeatable and reproducible.

Ready-to-use reagents are an integral part of each solution, designed to provide accuracy in results, enable a more efficient workflow for your lab, and accelerate answers for patients.



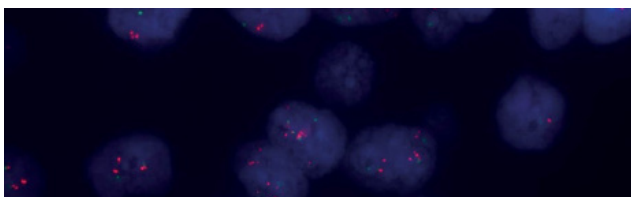
## H&E

Ready-to-use H&E reagents in closed containers ensure that your reagents last longer. You can consistently stain up to 3,000 slides (or five days, whichever comes first) with the same reagent.



## Special Stains

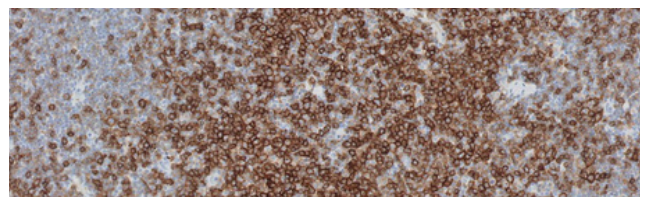
With a wide menu of ready-to-use stain kits and standardized, yet editable, protocols, Artisan Link Pro automates even your most complex stains. The solution reduces your exposure to hazardous chemicals and facilitates consistent high-quality special stains with ease.



## FISH and CISH

Designed for molecular slide-based tests, our range of probes and kits deliver key advantages to your lab, including:

- Automated and manual ISH staining options
- Robust signals and high signal-to-noise ratio from our unique oligonucleotide-based probes
- Rapid, high-quality hybridizations in just one to two hours
- Same-day results, saving you valuable time



## IHC

Our FLEX Ready-to-Use (RTU) IHC solution provides high technical quality for main diagnostic applications within a plug-and-play system.

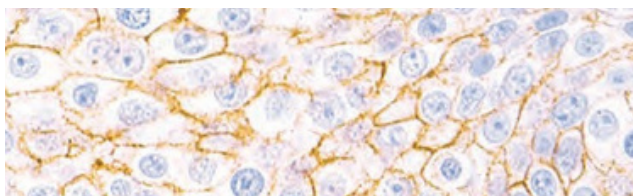
- RTU antibodies are calibrated and validated to provide high analytical sensitivity and specificity
- EnVision FLEX detection ensures optimal signal amplification and easily interpretable visualization of antigens
- Robust protocols compensate for pre-analytical variations and support you in providing reliable and reproducible results

# Companion Diagnostics

## Enabling targeted treatment for patients

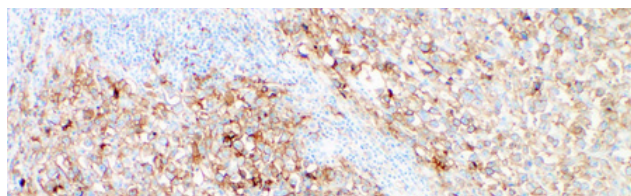
From developing the pioneer in companion diagnostics (CDx) to introducing the latest in immunoncology biomarker testing, we continue to strive to bring you the best in cancer diagnostics.

Our pharmDx portfolio includes clinically validated companion diagnostic assays, backed by scientific evidence, that enable accurate and rapid results to support targeted treatment for patients.



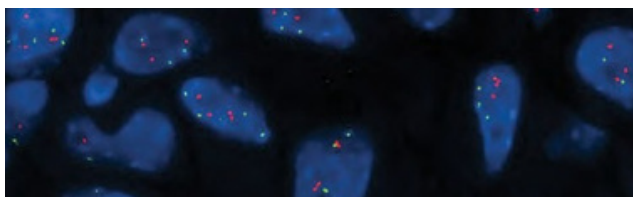
### HercepTest™ pharmDx

HercepTest™ pharmDx determines HER2 protein overexpression in certain formalin-fixed, paraffin-embedded (FFPE) cancer tissues and is indicated as an aid in the assessment of cancer patients for whom Herceptin® (trastuzumab), treatment is being considered. HercepTest™ pharmDx may be used as an aid in identifying patients for treatment with other drugs. Please see the local label for approved use in your area. HercepTest™ gives clear and specific staining, excellent assay precision, and proven agreement with known diagnostic IHC and FISH assays.



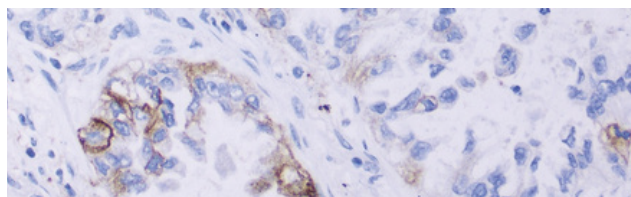
### PD-L1 IHC 22C3 pharmDx

PD-L1 IHC22C3 pharmDx is intended for use in the detection of PD-L1 protein in certain formalin-fixed, paraffin-embedded (FFPE) cancer tissues using EnVision FLEX visualization system on Autostainer Link 48. PD-L1 IHC 22C3 pharmDx is indicated as an aid in identifying certain cancer patients for treatment with KEYTRUDA® (pembrolizumab).



### HER2 IQFISH pharmDx

HER2 IQFISH pharmDx utilizes Agilent's cutting-edge IQISH hybridization buffer, which reduces diagnostic test turnaround time to less than four hours while delivering top-quality hybridization and diagnostic accuracy. Additionally, our buffer eliminates exposure to formaldehyde, making it a clear choice for your lab.



### PD-L1 IHC 28-8 pharmDx

PD-L1 IHC28-8 pharmDx is intended for use in the detection of PD-L1 protein in certain formalin-fixed, paraffin-embedded (FFPE) cancer tissues using EnVision FLEX visualization system on Autostainer Link 48. PD-L1 IHC 28-8 pharmDx is used for multiple cancer indications for treatment with OPDIVO® (nivolumab) or OPDIVO® (nivolumab) in combination with Yervoy® (ipilimumab)\*.

\* See the local OPDIVO® and YERVOY® product labels for specific clinical circumstances guiding PD-L1 testing.


# Dako CoverStainer Solution

The efficient, safety-focused, and accurate choice for H&E




H&E is the first and most frequently used stain, and sets the path for any subsequent staining requests. If not performed optimally, H&E staining can lengthen the overall time to patient diagnosis.

Dako CoverStainer fully automates every step of the H&E staining process from baking to drying enabling a safety-focused, lean and optimized workflow.

Dako CoverStainer delivers consistent, high-quality results while enhancing efficiency in the pathology laboratory.



The image shows a white and black Dako CoverStainer machine on wheels, positioned on a blue background. The machine has a control panel on top and a large open compartment for staining slides.

	<b>120</b> Oven capacity
	<b>38 dB</b> Quiet operating volume
	<b>3,000</b> Consistent staining quality

## Benefits of Dako CoverStainer solution:

### Efficient workflow

- Designed for continuous loading of smaller batches, giving a lean workflow with slides completed sooner
- Unique slide rack design supports lean processes
- Overnight run option with 120-slide oven capacity

### Safety-focused operation

- Ready-to-use reagents in closed reagent bottles prevent evaporation, and minimize handling of hazardous reagents
- With its quiet operation (38 dB), the solution can be placed next to the cutting area

### Accurate results

- Unmatched reagent consistency over 3,000 slides or five days of use
- Flexible staining with three sets of ready-to-use reagents and protocols, and both regressive and progressive staining options
- Unique slide rack design eliminating tissue cross contamination<sup>1</sup>

# Artisan Link Pro Solution

The consistent, safety-focused, and easy choice for special stains

Special stains present a unique challenge for many labs, and the experience needed to perform them may not always be available. Manually performed special stains are often complex and time-consuming, and the chemicals required can be a health risk to laboratory staff.

Artisan Link Pro is a unique special stains solution optimized for staining of multiple protocols at the same time. It automates the staining process from drying and deparaffinization through to finished slides, to deliver consistent and easy special stains with lab safety in mind.



## Benefits of Artisan Link Pro solution:

### Consistent staining

- Pre-optimized and validated protocols and ready-to-use reagents ensure consistency in results
- Reagents are dispensed with precision, fresh onto each slide position for quality staining

### Safety-focused operation

- Ready-to-Use reagents in closed bottles reduce exposure to hazards
- Optimized fume solutions remove unhealthy fumes to enhance safety for the user
- Automatic waste separation minimizes handling of reagents

### Ease of use and reduced hands-on-time

- Full automation of drying, deparaffinization and staining
- Significantly reduced hands-on-time and improved resource management, compared to manual staining<sup>2</sup>
- Ability to run 14 protocols simultaneously

# Dako Omnis Solution

Simplify the diagnostic process with fast, accurate IHC, and ISH results

IHC and ISH testing are important for accurate tumor classification and diagnosis, and hence for deciding on the best possible treatment.

As your lab faces ever changing demands, you need a solution that can help you manage your increasing workload efficiently and deliver the fast and accurate results that cancer patients need. This is exactly what Dako Omnis is designed for: enabling labs to complete as many patient cases as possible the same day they are requested with consistent high-quality staining, and minimal hands-on time.



The image shows a white and grey Dako Omnis Solution machine. It has a large front-loading door with the Dako logo and a control panel on the right side. The machine is designed for automated IHC and ISH testing.

-  Complete more cases with half as many instruments<sup>4</sup>
-  Improved case turnaround time by 10–12%<sup>4,5</sup>
-  Reduced hands-on time by 30–37%<sup>4,5,6</sup>

## Benefits of Dako Omnis solution:

### Stain with certainty

- Consistently produces high-quality IHC and ISH results to support pathologists in providing an accurate and confident diagnosis to patients
- The innovative system is combined with our renowned assays, including CDx developed in collaboration with pharma partners

### Continuous delivery of complete patient cases

- Gain the freedom to process patient cases as they arrive, no matter which technique is requested
- Experience a lean workflow, an even workload, and complete more cases faster. This benefits your lab, the pathologist, and ultimately the patient

### Maximize lab performance

- Dako Omnis enables fast completion of patient cases, and reliable ISH tests results in IHC-like turnaround times<sup>3</sup>
- With in-depth training, workflow optimizations, and applications support, our experienced teams will support you in realizing the results you and your patients need

# Autostainer Link 48 Solution

The flexible IHC solution you can trust

Autostainer Link 48 solution is designed to meet the unique needs of diagnostic and research labs.

The combination of Autostainer Link 48 and PT Link pre-treatment module forms an open, compact, bench-top system that automates the processing of IHC and IHC pharmDx slides. The solution is easy to use and adaptable to your lab's individual setup, delivering the flexibility required in a research or clinical environment.



AutostainerLink 48

Dako

-  Open for reagents
-  48 Slide positions
-  Instrument stability

## Benefits of Autostainer Link 48 solution:

### Fully open system

- Stain with ready-to-use reagents for easy and standardized quality results
- Open for other reagents and visualization which can be introduced as preferred
- Introduce clinically validated companion diagnostic assays, configured for the Autostainer Link 48, to support targeted treatment for patients

### Flexible operation

- Flexible DakoLink software enable customization of protocols and panels
- Ability to pretreat and stain in parallel increases efficiency
- A 48-slide capacity and 42-reagent capacity provide the flexibility to stain large batches or smaller batches of cases as they become available

### Instrument precision and stability

- Robust and proven instrument technology<sup>7</sup> contributes to a reliable and efficient workflow
- Requires little maintenance, which helps you keep up efficiency

# Your Premier Pathology Staining Partner

When you need us, we will be there

Agilent has a dedicated team of skilled and experienced service engineers and customer application specialists ready to partner with your lab throughout the life cycle of your Agilent solution.

Our services and support are designed around your needs to help improve productivity and performance, and ensure critical uptime in your lab, with the high quality you need.

[Dedicated support throughout the lifetime of your staining solution:](#)

- Site survey and site preparation
- Installation and qualification
- Application and validation support
- Training and staff certification
- Preventive maintenance
- Repairs and service coverage
- Customer support
- Scientific engagement
- Workflow and lab solutions consultancy

## References

1. Case Study on Dako CoverStainer for H&E - No Risk of Cross Contamination, **2019**, 38686.
2. ArtisanLink vs. Manual Methods, **2010**, 29017.
3. Dako Omnis Testimonial Rey Hato Lab (HRP) Customer Testimonial, **2020**, 29355.
4. Dako Omnis Patient Case Management (PCM) Workflow—White Paper, **2021**, 29447.
5. Case Study on Dako Omnis from the Netherlands, **2021**, 29419.
6. Case Study on Dako Omnis—Dutch experience, **2019**, 29295.
7. Mean Time Between Service Intervention - Autostainer Link 48, 2021, D65340.

Are you interested in our  
**staining solutions?**

Let us know your lab's needs and we will contact you to find  
the best solution to meet them.



Learn more:

[www.agilent.com/en/pathology-solutions](http://www.agilent.com/en/pathology-solutions)

D56551\_02

This information is subject to change without notice.

© Agilent Technologies, Inc. 2023  
Published in the USA, June 10, 2023  
29160 2023.JUN10



**Altium International Sp. z o.o.**  
ul. Puławska 303, 02-785 Warszawa  
telefon +48 22 549 14 00  
patologia.pl@altium.net  
www.perlan.com.pl  
www.altium.net

