

Technical Specifications

Image Sensor	1280x1024px; 4.8µm size; 10.000FPS (400x32); 62% QE @ 630nm; global shutter
Interfacing	C-mount; Ethernet; DVI-D; USB
Trigger	Latency down to 200µs; 2 independent outputs 5V TTL; freely configurable gating
Flash	4 simultaneous imaging settings, 6 flash outputs, 10ns – 100ms in 10ns steps
Illumination	Colors: blue, green, red; Flash length 10ns – 5µs
Storage Format	RAW, AVI uncompressed, MJPEG, MP4, XLS, XLSX, CSV (infinite recording)
Analysis	Two independent Regions of Interest (ROI)
Remote Control	HTTP, ZMQ

Our Mission

Based in Southern Germany, we specialize in developing and providing highly innovative optical measurement and automation systems for both research and industrial customers. Our ODIN platform offers comprehensive solutions for droplet creation, analysis, sorting, and quality control.

Our mission is to equip scientists working with droplet microfluidics with the best tools to address the unmet needs in life science research.

Custom Development

Sensific offers custom development services for your next project, tailoring our ODIN system to your needs.

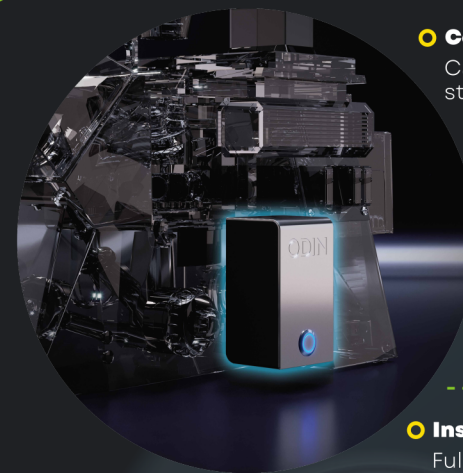
SENSIFIC

Sensific GmbH
Hubertus-Liebrecht-Strasse 39
88400 Biberach an der Riss

✉ info@sensific.de
www.sensific.de



Scan to
visit our
website



- Comprehensive Imaging:**
Capture droplets in real-time while reducing storage demands by up to 95%.
- Enhanced Visualization:**
Experience multi-colored and fluorescent imaging with up to 4 parallel modes.
- Crystal Clear Images:**
Benefit from sharp imaging thanks to our ultra-short, pulsed illumination.
- Instant Quality Control:**
Fully integrated real-time data analysis eliminates extensive post-processing, even at imaging rates of up to 10,000 frames per second.

ODIN

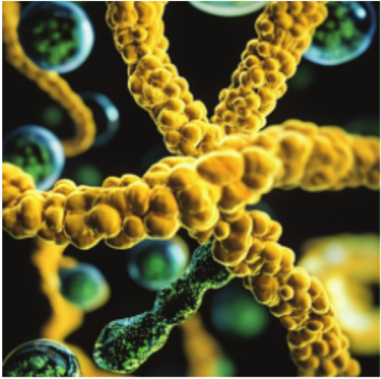
Unlock the power of precision

Elevate your research and industrial processes with our advanced solution for image-based analysis and sorting of droplets, cells, spheroids, and particles.

- User-Friendly Interface:**
Gate your sample within a couple of seconds with our intuitive user interface.
- Integrated Analysis:**
Combines morphological and fluorescent marker analysis in one step.
- Efficient Sorting:**
Count, measure, and filter effortlessly to identify and separate the high performers.
- Sterility:**
Ensures high cell viability and maintains sterility with enclosed channels.
- Speed and Efficiency:**
Boost efficiency and efficacy of encapsulation to an unmatched level.

SENSIFIC

Sequencing



Perfect for Single-Cell RNA Sequencing

Unlock the full potential of single-cell RNA sequencing (scRNA-Seq) with Sensific's advanced technology.

Our enhancements to the Drop-seq method ensure nearly 100% droplet encapsulation purity, improving efficacy, accuracy, and throughput.

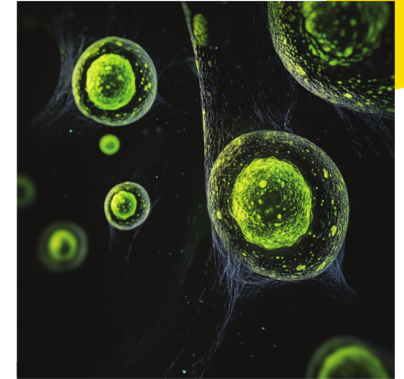
Boost encapsulation efficiency from under 1% to 14%, while cutting reagent costs and experiment time. ODIN reduces cellular stress and background RNA noise by 99%, ensuring clear, pristine results.

Cell Line Development

Transform Your Single Cell Sorting

ODIN System combines microfluidic channels, sorting switches, and bright field imaging for accurate single-cell sorting. You can efficiently encapsulate and sort single cells into single droplets, replacing traditional micro-well plates while ensuring precise separation and control.

The procedure results in a target vessel with thousands of droplets, each with exactly one cell or particle. Additionally, fluorescence capabilities enable targeted cell enrichment. This combination enhances applications ranging from personalized medicine to environmental studies.



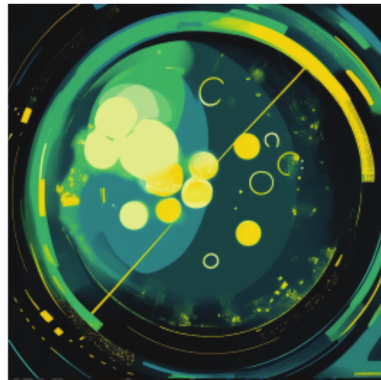
Microbiology

Accelerate Your Bacterial Research

Efficiently select fast or slow-growing bacterial populations, crucial for drug development and biomedical research. Screen drugs, determine optimal dosages, and detect resistances with ease.

ODIN System enables rapid screening by encapsulating bacteria in droplets for quick analysis and sorting.

Easily screen samples multiple times after incubation or treatment, minimizing reagent use and reducing experiment duration and costs.



Extraordinary Quality

Smart High-Speed Imaging

ODIN's real-time data analysis minimizes storage demands, making it the perfect solution for long-term rare event imaging.

Unlike standard high-speed cameras, ODIN filters and stores only relevant data, enabling longer recording times and simplifying post-processing.

By reducing data sizes by 10-100 times, it lowers resource and computing needs, offering a cost-efficient solution for managing large datasets in scientific and industrial applications.

